

THE TOLEDO SHIPYARD

2245 FRONT STREET • TOLEDO, OHIO 43605

EST. 1895

Full Service Shipyard
with Dry Dock

Dockside Repairs

Two Graving Docks –
805 Feet and 550 Feet



20,000 Square Foot
High Bay Facility

Under Hook
Capacity of 50 feet

Two – 20 Ton Cranes

Contact: Paul LaMarre – Manager of Maritime Affairs
Toledo-Lucas County Port Authority
T: 419-260-9985 E: plamarre@toledoportauthority.org
IRONHEAD Marine – 419-690-0000

MADE IN THE U.S.A.



THE TOLEDO SHIPYARD HISTORY

In 1888, John F. Craig, founder of the Craig Shipbuilding Company, moved his expanding interests in the building of steel hulled vessels to Toledo, Ohio. From its inception, the Toledo Shipyard constructed vessels by the dozens and had completed 61 new builds by 1905. The Toledo Shipyard was sold to American Ship Building Company in 1906, which had begun to acquire nearly every available ship repair and construction facility on the Great Lakes. Renamed the Toledo Shipbuilding Company, the yard continued to bolster significant shipbuilding capability and had produced 40 vessels by 1918 when contracted to build cargo vessels for the U.S. Shipping Board in support of World War I.

Completing 26 government builds by 1922, the yard continued to produce the finest lake cargo vessels to ply the inland seas until 1942 when commissioned to build two United States Coast Guard vessels, most notably the USCGC Mackinaw in 1944. Both Coast Guard builds were know for employing a significant female workforce and were representative of the "Rosie the Riveter" age of ship construction during World War II.

In the early 1960s, the Steinbrenner family, most notably known for operating the Kinsman Marine Transit Company, became controlling stakeholders in the American Shipbuilding Company. Ceasing operations in 1985, the American Shipbuilding Company had constructed a total of 88 vessels during their tenure in Toledo.

Assuming operational responsibility at the Toledo Shipyard in the mid-1980s, the Toledo-Lucas County Port Authority has partnered with multiple ship repair firms to ensure the sustainability of the Toledo Shipyard. The Toledo Shipyard is now operated by IRONHEAD Marine Inc. and employs an experienced workforce who has not only helped shape the yard's history but will ensure its viability in the future

Questions? Contact Paul LaMarre at 419-260-9985 or plamarre@toledoportauthority.org



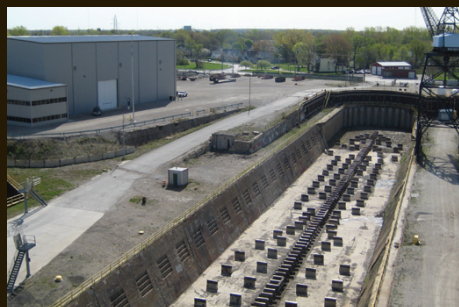
THE TOLEDO SHIPYARD - located in the Port of Toledo, Ohio - has been providing services on the Great Lakes for more than 100 years. Located on the Maumee River and uniquely positioned for vessel repairs, as well as the fabrication and shipping of heavy industrial equipment, the Toledo Shipyard has direct access to interstate and rail shipping.

Owned by the Toledo-Lucas County Port Authority and operated by IRONHEAD Marine, the skilled workforce at the Toledo Shipyard provides heavy industrial fabrication, equipment assembly and full service vessel maintenance complete with a dry dock facility. The Toledo Shipyard has direct access to the Great Lakes, major interstates and several rail yards, and is centrally located to major cities in the Great Lakes region.

About the Toledo Shipyard

An operator of the Toledo Shipyard since 2006, IRONHEAD provides dry-dock ship repair services, ranging from survey work and hull repairs, to mechanical repairs/rebuilds and blasting/painting projects. With two 20 ton cranes providing heavy lift and a 50-foot high hook capacity all housed within a 20,000 square foot high bay facility, the Toledo Shipyard can handle most any project.

IRONHEAD employs union boilermakers and machinists, and operates two graving dry docks – 805 feet and 550 feet - with direct access via the Maumee River to the Great Lakes.



Services of the Toledo Shipyard

- Ship repairs, modifications and construction
- Hull repairs
- Machinery repairs
- Fabrication and Welding
- Blasting and Painting
- Modifications and Construction
- Electrical and Controls
- Assembly
- Plate Rolls
- High Definition Plasma and Oxy-Fuel Cutting Table
- Saw Cutting to 24 feet
- Ironworker and punch
- 50+ welding machines
- Welding Services – AWS and ABS Certifications

ABOUT THE TOLEDO SHIPYARD OPERATOR

Founded in 2002, the IRONHEAD group of companies operates two fabrication shops and the Toledo Shipyard. IRONHEAD serves the shipping, utility, steel, air pollution control and engineering/construction industries. IRONHEAD is a diverse, heavy industrial fabricator and equipment assembler, and a full service supplier of ship modifications, repairs and construction. Utilizing union machinists and boilermakers in its skilled workforce, IRONHEAD is an experienced fabricator and assembler of heavy equipment. IRONHEAD annually completes in excess of \$10 million in projects.



IRONHEAD Fabricating Incorporated

IRONHEAD Fabricating is logistically positioned to complete a diverse array of fabrications and provide competitive priced deliveries by truck, rail or sea. IRONHEAD Fabricating has an experienced team of fabrication professionals and a superb network of engineering, detailing, machining, heat treating and galvanizing suppliers.

IRONHEAD FABRICATING IS EQUIPPED FOR:

- Welding
- Equipment Assembly
- Carbon, Stainless, Aluminum and Alloy Steels
- Painting, Galvanizing, Machining and Heat Treating
- Dock side facilities with barge access to the Great Lakes



Questions? Contact Paul LaMarre at 419-260-9985 or plamarre@toledoportauthority.org



Don Mutchler: Shipyard Superintendent

Don Mutchler has been in the marine industry for over 30 years. He began his career in 1977 as a journey boilermaker after receiving his Bachelor of Science from the Ohio State University. He earned certifications with the American Bureau of Shipping and the Coast Guard. He is also certified in pipe, plate and boiler tube welding.

As a foreman he was responsible for the duties of over 50 workers in completing all facets in the marine repair industry.

In 1997 he was promoted to the position of marine superintendent/manager. His responsibilities included over-seeing all aspects in the completion of multiple marine projects. During peak times he would have crews of over 200 men on 20 lake freighters.

In 2006 he took on the task of re-opening the Toledo Shipyard. He assisted in up-grading the facilities to continue the successful history of ship repair in the Great Lakes region.



TOLEDO | LUCAS COUNTY
PORT AUTHORITY